

# UVC1000/UVC1010 Vacuum Generator/Pressure Controller



UVC1000



UVC1010, 19 inch wide rack-mount

## STANDARD FEATURES

- 2 modes of operation: vacuum or pressure
- 29 inches Hg vacuum from shop air supply
- Lightweight design
- Built-in vacuum converter and pressure regulator
- Available as standard (UVC1000) or 19 inch wide rack-mount version (UVC1010)

## APPLICATIONS

- Hazardous environments
- Source for calibration of compound gauges
- Low-cost alternative to vacuum pump
- Need for precise vacuum or pressure control

## SPECIFICATIONS

### Pressure Media:

Filtered shop air

### Pressure Input:

100-160 psi\*, 4.2 SCFM, AN-4 37° flared tube setting

### Pressure Limit Monitor Gauge:

Size: Two-inch diameter

Range: 0-160 psi

### Vacuum Monitor Gauge:

Size: Two-inch diameter

Range: 0-30 inches Hg

### Regulator:

Aluminum/brass 0-100 psi output pressure

### UVC1000 Case:

16 gauge painted steel

### Pressure/Vacuum Selector:

Brass

### Fittings:

Brass, quick-disconnect, 1/4 in.

Internal Tubing: 250 psi rated tubing

### Weight:

UVC1000: 6.6 lb (2.9 kg)

UVC1010: Approximately 7 lb (3 kg)

\* At input pressures less than 100 psi, vacuum level may be less than 29 inches Hg.

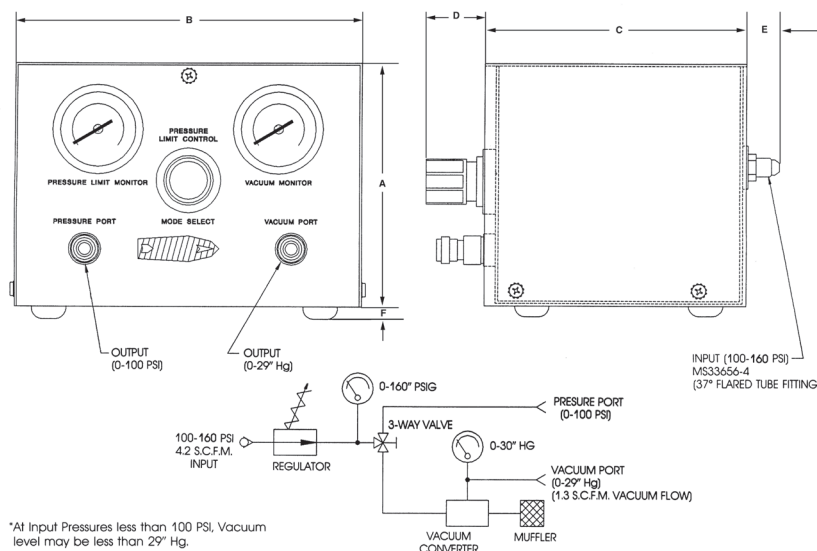
### UVC1000 DIMENSIONS

A	5.70 in. (144.78mm)
B	8.14 in. (206.75mm)
C	6.10 in. (154.94mm)
D	1.30 in. (33.02 mm)
E	0.80 in. (20.32 mm)
F	0.30 in. (7.62 mm)

Consult factory for UVC1010 dimensions.



55291



\*At Input Pressures less than 100 PSI, Vacuum level may be less than 29" Hg.

**UVC1000/UVC1010** Vacuum Generator/Pressure Controller**MODEL/PRICE**

PART #	DESCRIPTION	EST. SHIP WEIGHT	PRICE
56085	UVC1000-1, Portable table top Vacuum generator/Pressure Controller	12 lb	Consult
59415	UVC1010-1, 19 inch rack-mount Vacuum Generator/Pressure Controller	19 lb	Consult

**OPTIONS/ACCESSORIES**

PART #	DESCRIPTION	PRICE
55281	5 ft. long hose with quick-disconnect plug (brass) on one end and 1/4 in. 37° female AN swivel tube coupling on the other end	Consult
69481	Additional operating and maintenance manual	Consult
60195	Standard test port quick-disconnect hose fitting male coupling body to 1/4 in. NPT female (brass)	Consult
55291	Test port male quick-disconnect with 1/4 NPT female (finger tighten to DUT, no tools required)	Consult